

CaféTO- Increasing Dining Capacity for Toronto's Restaurants

TABIA Presentation – June 9, 2020



CaféTO Guiding Principles

Following Public Health Directives: Support for local restaurant and bar owners with physical distancing requirements as they reopen under new occupancy constraints and service protocols

Efficiency: Required to take advantage of short café season

Simplicity: Streamline criteria to assist restaurateurs with understanding critical accessibility and health and safety requirements

Customer Service: Thoughtful support for local businesses during a time of crisis

Balance: Install full streetscape approaches with a variety of interventions for curb lane closures, in consultation with BIAs

Equity: Provide accessible space for all Torontonians and restaurant owners

Summary of Current Regulations Affecting Cafés

1. Chapter 742 – Sidewalk Cafés, Parklets and Marketing Displays (September 2019): Consists of guidelines that address accessibility, pedestrian movement, and allows new café configurations
2. Zoning Bylaw 569-2013 “Eating Establishments” – Regulates Outdoor Patios on Private Property
3. AGCO Licensing Requirements – updated June 8, 2020
4. Health Protection and Promotion Act: Provides inspection schedule based on risk; DineSafe Program
5. Noise Bylaw – Includes decibel limits and time restrictions for some types of noise



Current Allowable Café Configurations



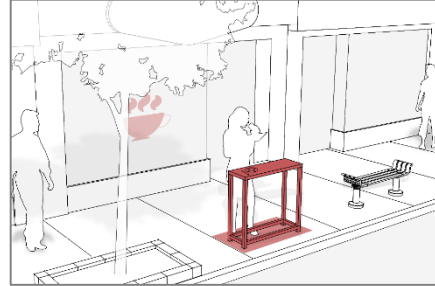
Frontage Café

Located immediately adjacent to the frontage wall of a bar/restaurant



Small Frontage Café (no permit required)

Single line of seating, with or without tables, along the frontage wall of a bar/restaurant



Small Curbside Standing Café (no permit required)

Single table parallel to the curb line, in the furnishing and planting zone of the sidewalk

Not permitted in 2020



Curbside Cafes

Located close to the curb, pedestrians walk between the café and the building frontage



Parklet Cafes

Located in the curb/parking lane of a street

CafeTO: Four Tactics to Support Toronto's Restaurants & Bars



**Pause Applications,
Permitting and Fees
under Chapter 742 for
Sidewalk Cafés &
Parklets**



**Define Essential
Café Placement
Guidelines**



**Education and
Enforcement of Café
Guidelines, Physical
Distancing and
Cleaning
Requirements**



**Facilitate Curb Lane
Closures in BIAs and
elsewhere**



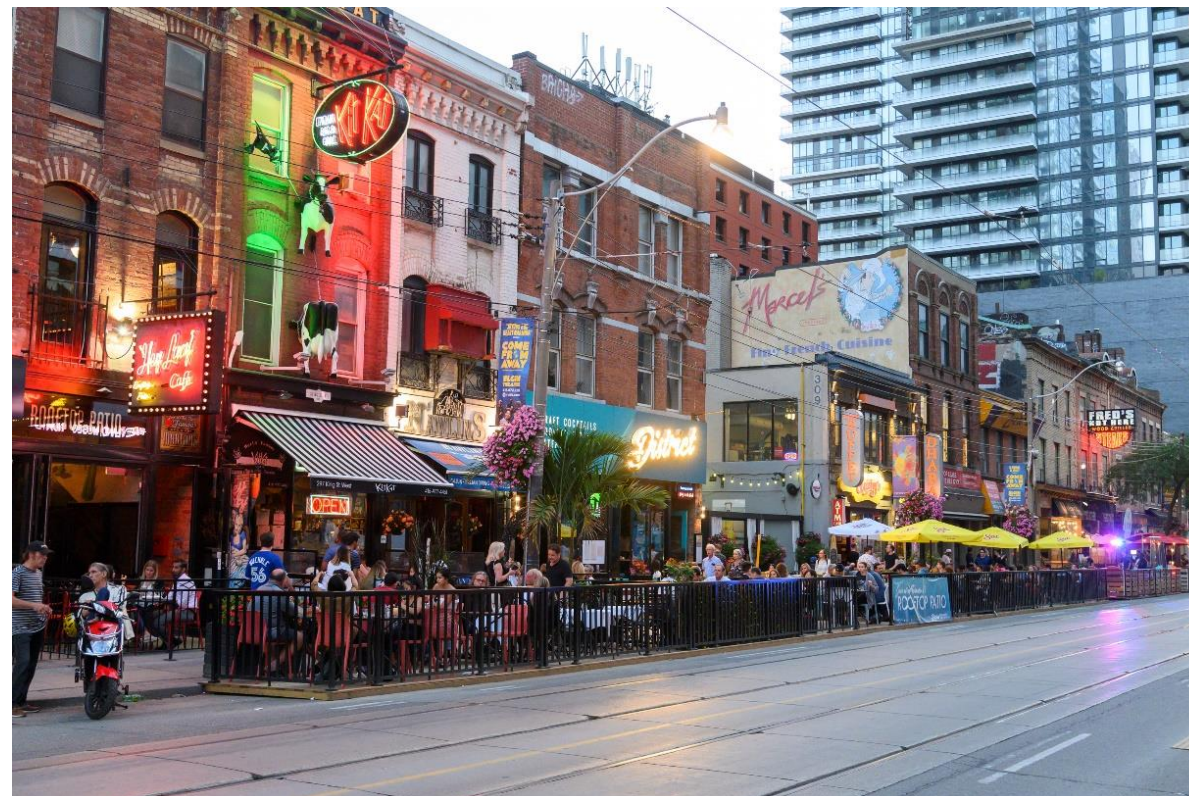
Pausing Permitting, Applications and Fees under Chapter 742

Issue:

- Occupancy constraints are expected from the Province to ensure physical distancing.
- Need to provide an expeditious and wide-spread roll-out due to the expected amount of interest when restaurants/bars are permitted to open
- Permit fees challenging for most restaurants
- The City is looking for ways to provide support to local businesses and animate our main streets

The City will:

- Pause permit, application, fee and circulation requirements to allow restaurants to operate cafés under streamlined conditions including in the curb lane where closures are possible





Define Essential Café Placement Guidelines

The City will:

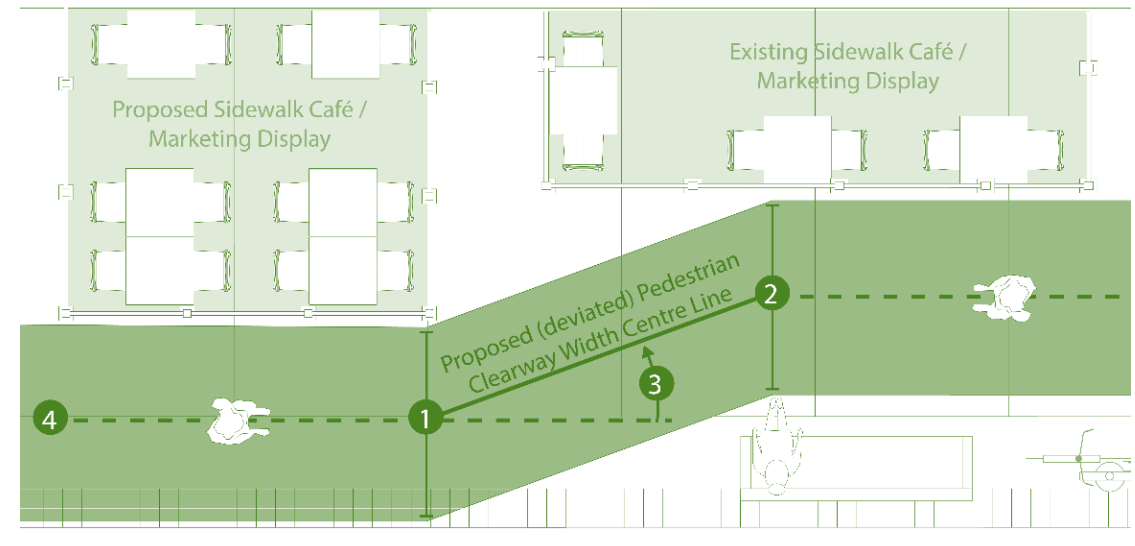
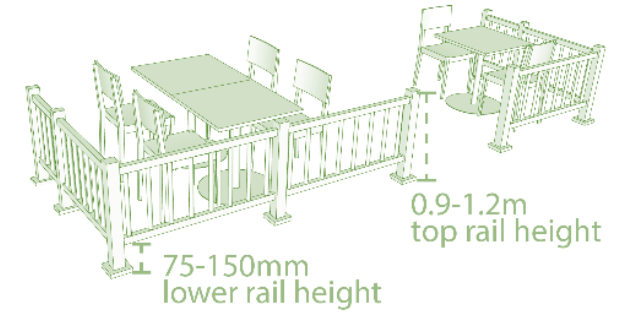
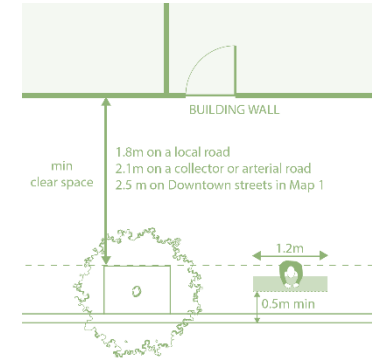
- Provide local restaurant/bar operators with a set of guidelines that detail minimum requirements to install or expand a temporary sidewalk café or curb lane café
- Easy to implement and understand guidebook

Selected Guidelines:

- Allowable café dimensions and configurations
- Pedestrian clearway and accessibility necessities
- Prohibitions (i.e. awnings, heaters, BBQ, amplified sound)
- Public health requirements for cleaning, disinfecting, etc.

Registration:

- Restaurant and bar operators must register at toronto.ca/CafeTO, includes requirement to upload Certificate of Insurance





Education and Enforcement

The City will:

- Focus on a customer service approach
- Act as a supportive contact for business owners, assisting with education where required
- Transportation Services Officers will conduct proactive inspections
- MLS Officers will respond to complaints received from 311
- Toronto Public Health Inspectors will be engaged
- Transportation Services Officers (TSOs) have the authority to remove illegal and unsafe conditions (Streets and Sidewalks Chapter 743), if required





Facilitate Curb Lane Closures

The City will:

- Close curb lanes in consultation with:
 - BIAs and other similar organizations
 - Existing parklet permit holders
 - Individual restaurants/bars, where possible
- Contract out Traffic Plans and BIA site visits
- City Traffic Operations will review plans

Streetscape Approach to Curb Lane Closures Including :

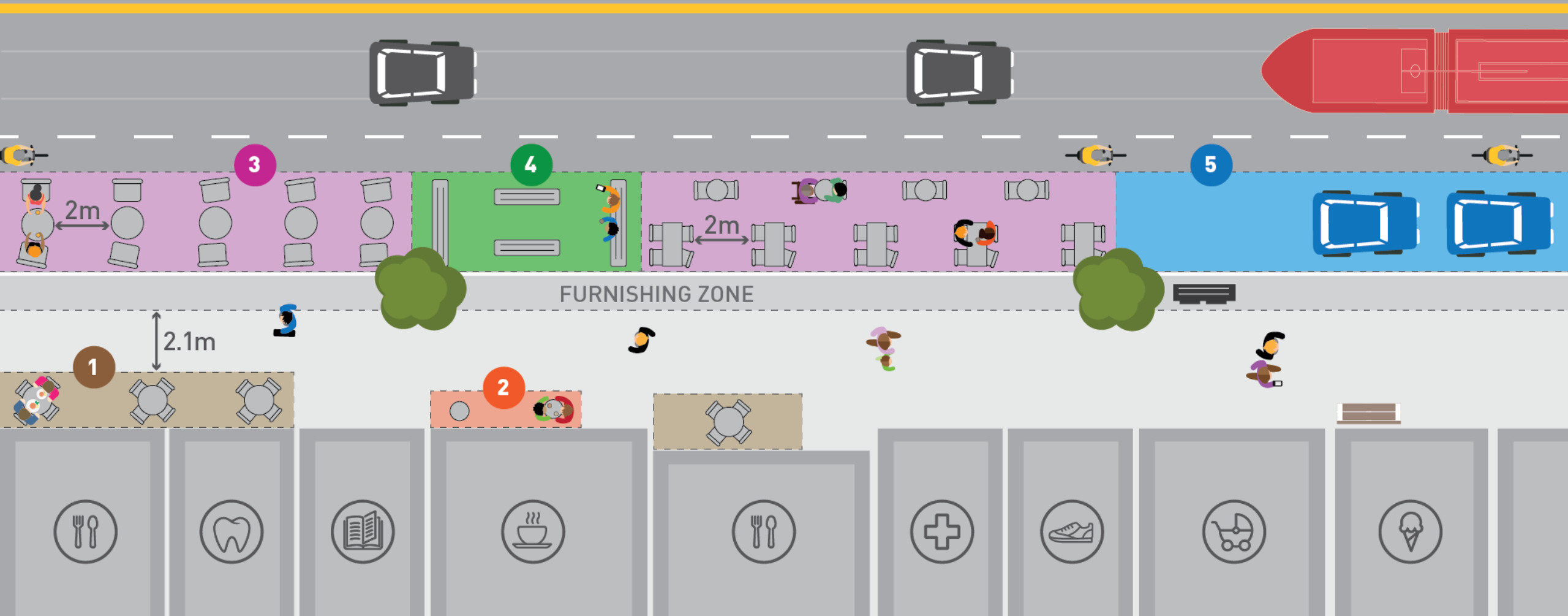
- Curb lane cafés
- CurbTO Zones for Parking and Curbside Pick-up
- Public parklets for outdoor dining and seating opportunities
- BikeShare Stations





Facilitate Curb Lane Closures

- 1 Expanded Sidewalk Frontage Café
- 2 Small Frontage Café
- 3 Curb Lane Café
- 4 Public Parklet
- 5 Temporary 10-Minute Parking Zone



Site Visits with IBI Group

- IBI Group is a global firm with a specialty in traffic engineering, urban design and streetscape planning
- Some BIAs with different streetscape typologies were selected as test sites and we are visiting with them this week
- Solid waste will accompany most sites to ensure collection needs are met.
- In some cases, a representative from the TTC may also attend.
- Ron and Marianne at the BIA office will schedule your appointment with IBI Group.
- Before your visit, you must have an understanding which restaurants are interested in curbside cafés. Ron and Marianne can provide you with a Needs Assessment document if you need assistance reaching out to your membership.

Equipment – Start of Closure

- Lane closures will begin with either water filled jersey barriers or concrete blocks
- Equipment type will depend on available inventory



White Yodock 2001MB Wa... Orange Yodock 2001MB ...

Water-Wall™ Barrier

Select a color: Orange



Equipment – Linear Closure

- Two equipment choices will be offered to BIAs for continuous curb lane closures – decorative planters or linkable delineator “candlesticks”
- If planters are selected, the BIA will be responsible for planting and maintaining the planters throughout the season
- If planters are selected, the BIA will be responsible for soil, plant material and generally maintaining the planters throughout the season
- Economic Development & Culture will offer grants equal to 50% of plant material and maintenance costs to a maximum of \$5,000 per BIA.
- Recommend coordination with restaurants receiving curb lane cafés for watering

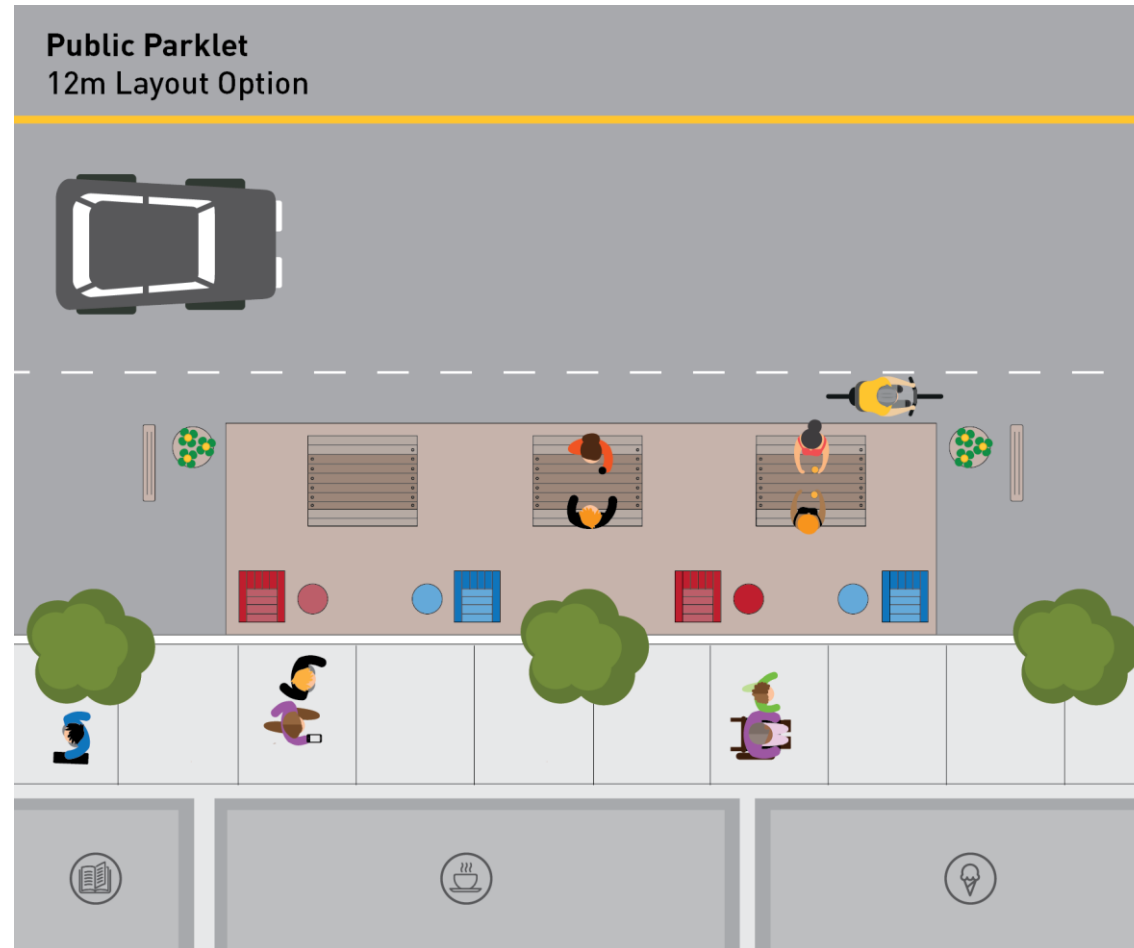


Public Parklets

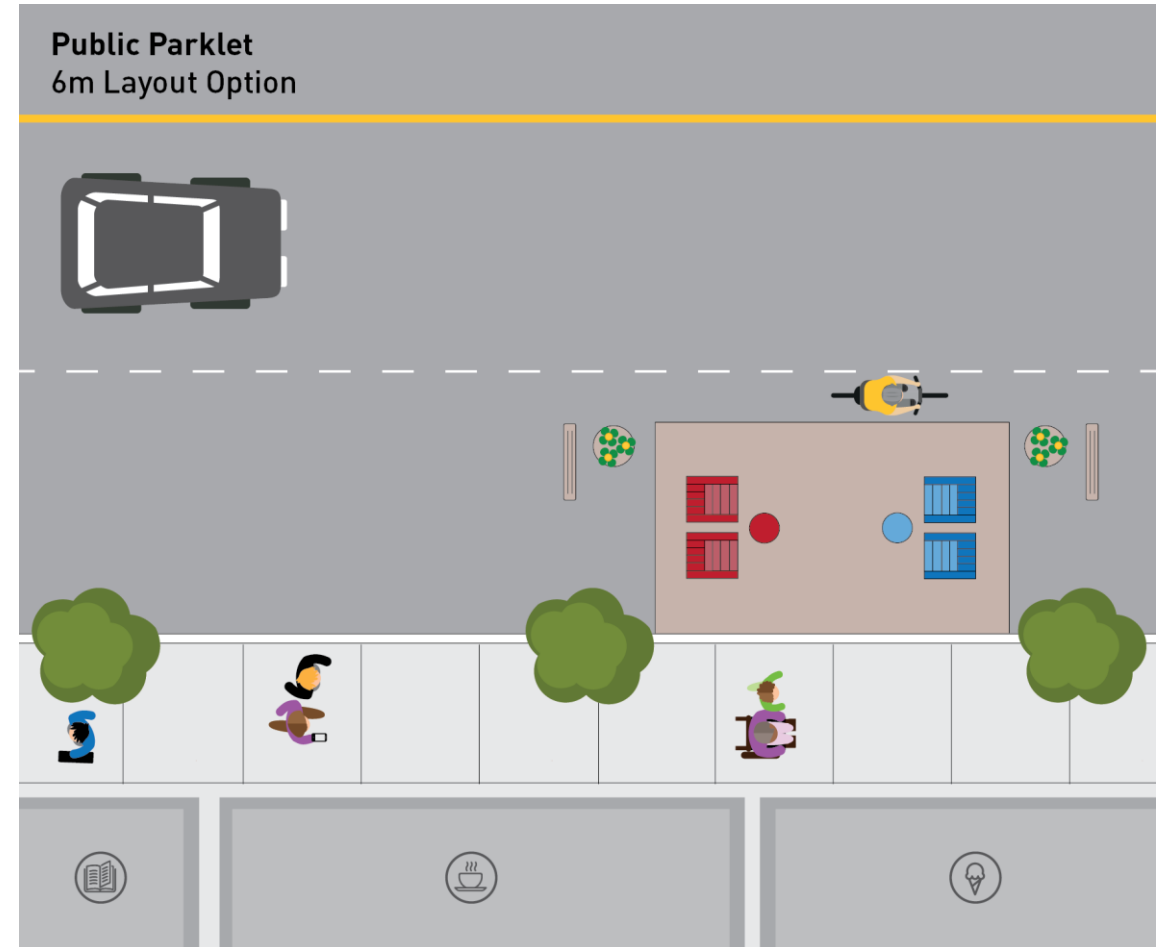
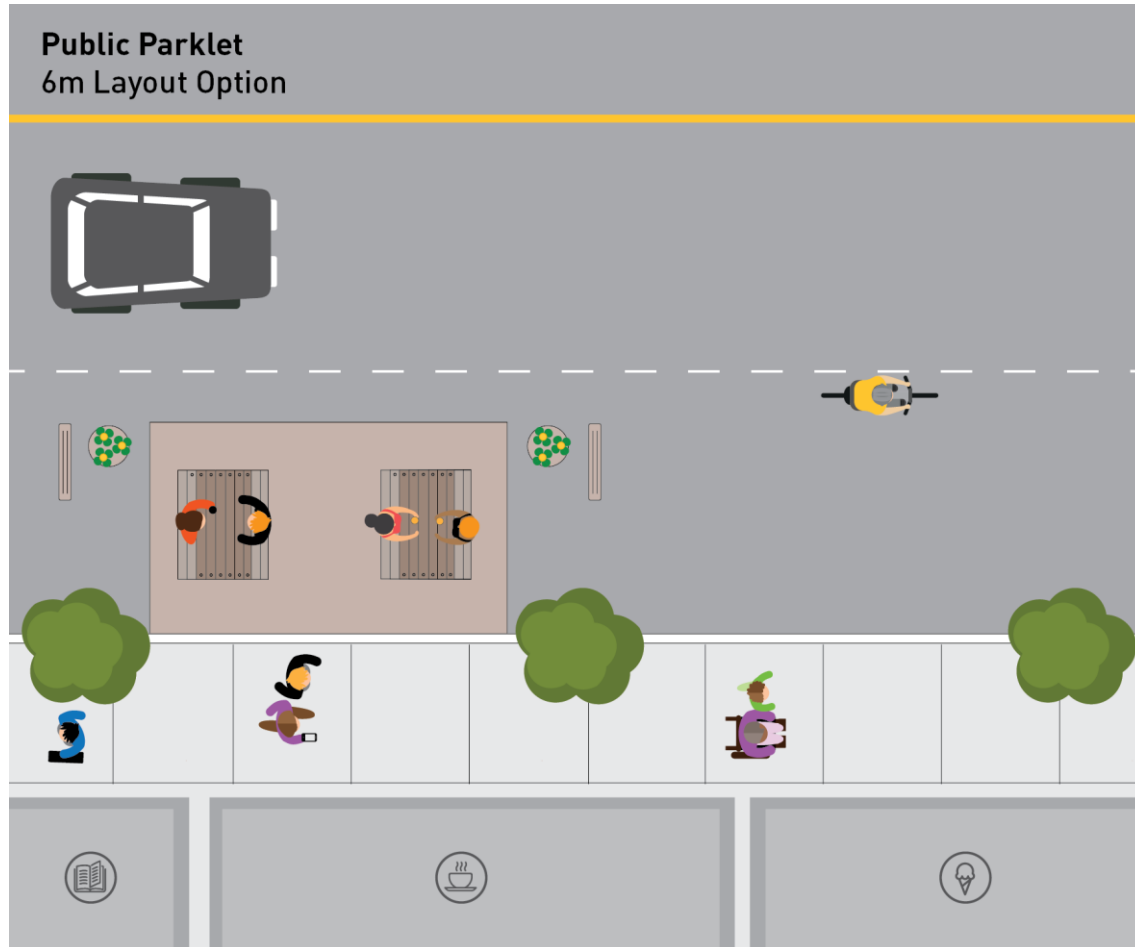
- Seating spaces for the public with the option to enjoy take-out from a local restaurant, or to simply use the space at their leisure
- Recommended in 12m or 6m physically distanced configurations to be furnished by the City with picnic tables, Adirondack chairs or a combination of both
- Umbrellas or shading to be supplied and maintained by the BIA on as as-need basis
- All furnishings to be placed at grade, no decks or structures
- More information on maintenance is forthcoming



Public Parklets – Configuration 1



Public Parklets – Configuration 2



Solid Waste Management

- Representatives from Night Collection and Litter Operations will conduct site visits for each closure area
- For areas where a curb lane closure runs the length of a block-face, collection areas will need to be incorporated into the closure design and businesses will need to adjust their collection location
- Astral litter bins will be relocated if required



Patios on Private Property

Eating Establishments (Zoning Bylaw 569-2013):

- Outdoor patios must be connected to an eating establishment and are not permitted to be free-standing
- Patio must be set back at least 30 metres from a lot in a residential zone
- If the patio is above the first story (e.g. rooftop) then the required setback is 40 metres
- The maximum area of the outdoor patio is 30 square metres or 30% of the interior floor area of the premises it is associated with, whichever is greater
- If the patio is in the rear of the property, there must be a fence abutting any residential zone
- MLS enforces the Zoning Bylaw



Registration Process

- Individual restaurant and bar operators must register their intent to install or expand a café in the public Right-of-Way with the City. The registration process will require operators to provide:
 - City of Toronto Eating Establishment Licence Number
 - A completed Certificate of Insurance
 - City of Toronto Café Permit Number (for existing cafés)
 - Letter of Permission from adjacent property owners (for expanded sidewalk cafés)
- We expect the registration process will be live at toronto.ca/CafeTO in the next week. The Guidebook will be available online at the same time.
- Restaurants must complete the process in order to expand their café either on the sidewalk or in the curb lane.

Additional Information

- Marketing displays will not be permitted in curb lane closure areas. Marketing Display applications will be accepted by MLS shortly as part of their re-opening plans, as per the regular Chapter 742 Process.
- Businesses requiring licences and/or permits from the City of Toronto can email mlsapplication@toronto.ca and they will be contacted directly by City staff about their applications. Licence application and renewal fees must be paid online.
- CaféTO does not include temporary sidewalk sales. Sidewalk Sale Permits applications are available online.
- The City will not comment on café dimensions or furniture requirements beyond what is noted in the Guidebook for AODA compliance. BIAs will be responsible for allocating space in curb lane closure areas for individual restaurants.

Next Steps

- Several program elements require Council approval. A report has been submitted for June 22 Executive Committee, Council is June 29
- Registration process is expected to be posted at toronto.ca/CafeTO later this week, including releasing the guidebook
- Site visits with IBI group will be arranged via the BIA Office, starting next week. Connect with the BIA Office when you are ready with your list of restaurants that wish to participate
- Stakeholder engagement with restaurant industry associations, individual restaurant/bar operators is ongoing
- Send your questions to cafeto@toronto.ca. Your initial questions will help us build a database of FAQs. Questions in today's presentation require some cross-divisional coordination and a written response to all BIAs via TABIA will be provided soon.